

LS-32-2150A

DIVISOR ATIVO BANDA-L SAT 32 SAÍDAS



COD-Z: 43.10.106

LS-32-2150A

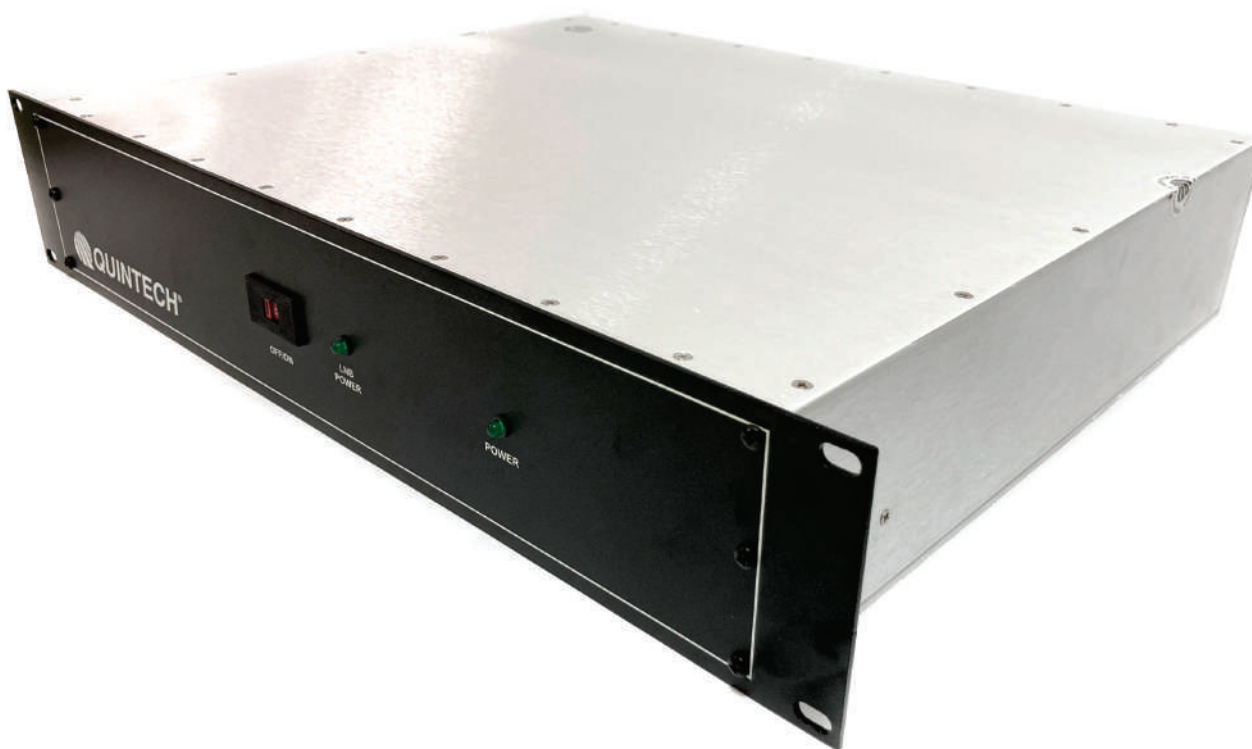
DIVISOR ATIVO BANDA-L SAT 32 SAÍDAS



COD-Z: 43.10.106

LS-32-2150A

DIVISOR ATIVO BANDA-L SAT 32 SAÍDAS



COD-Z: 43.10.106

LS-32-2150A

DIVISOR ATIVO BANDA-L SAT 32 SAÍDAS



COD-Z: 43.10.106

LS-32-2150A

DIVISOR ATIVO BANDA-L SAT 32 SAÍDAS



COD-Z: 43.10.106

LS-32-2150A

DIVISOR ATIVO BANDA-L SAT 32 SAÍDAS



COD-Z: 43.10.106

LS-32-2150A

DIVISOR ATIVO BANDA-L SAT 32 SAÍDAS



COD-Z: 43.10.106

LS-32-2150A

DIVISOR ATIVO BANDA-L SAT 32 SAÍDAS



LS32 2150A LS322150A1FVB000 32-Way Active Splitter (950-2150 MHz)


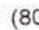
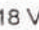
COMPANY WITH
QUALITY SYSTEM
CERTIFIED BY DNV GL
= ISO 9001 =

General Description:

The **LS322150A1FVB000** is a commercial quality 32-way splitter that meets strict level and match specifications achieved through the use of Quintech's proprietary microstrip and SMT technology. It operates over the 950-2150 MHz frequency range and permits signal splitting with zero loss, eliminating the need for external distribution amplifiers. The LS322150A1FVB000 provides LNB DC power insertion that can be switched on or off via the front panel mounted slide switch (see LNB Power specification below).

Note: All unused ports must have 75 Ω terminations.
All outputs are DC blocked.

Specifications:

Frequency:	950-2150 MHz
Impedance:	75 Ω
P1dB:	-10 dBm
Insertion Loss:	0 \pm 2 dB
Frequency Response:	\pm 2 dB
Isolation:	18 dB
Input Return Loss:	12 dB
Output Return Loss:	12 dB
Noise Figure:	12 dB
RF Connectors:	Type F, 75 Ω
Power Requirements:	18-24 V  , via 2-pin quick connect barrier strip
LNB Power:	18 V  (800 mA max. available for LNB power)
Power Consumption:	5 W @ 18 V  (plus customer LNB power load)
Mechanical:	2 RU (3.5" H x 19" W x 14" D)
Weight:	11 lbs. gross (boxed), 6.2 lbs. net
Certifications:	CE

COD-Z: 43.10.106