

Shanghai Baud Data Communication Co., LTD.

BDCOM GP1501DT

User Manual



Introduction

BDCOM GP1501DT is a convenient, flexible and standard broadband comprehensive access device with high integration. It can provide high-performance broadband access for home users, individual merchants and so on.

Main characteristics:

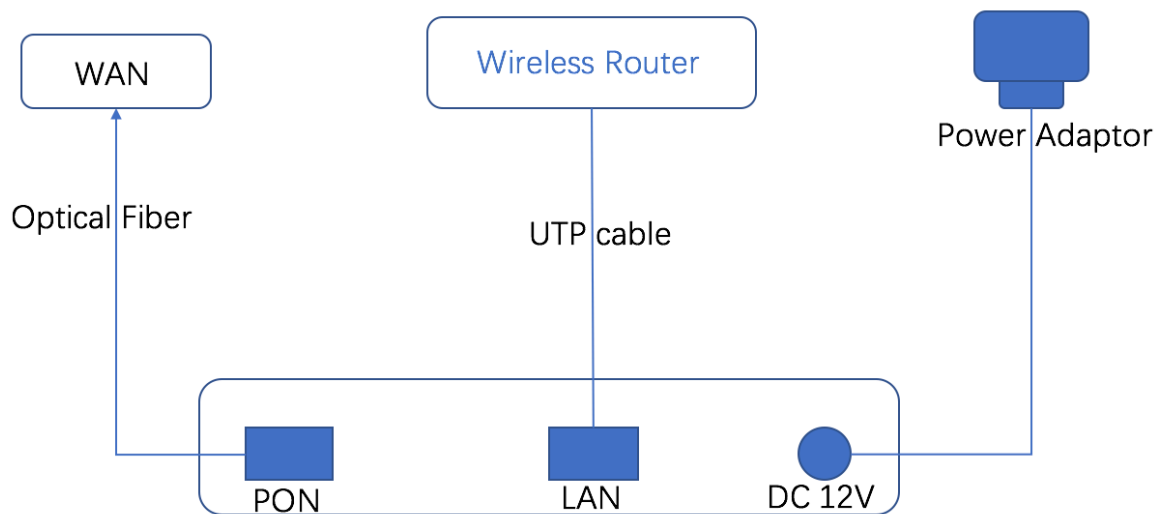
Comply with ITU-T G.984/988 and GPON uplink

Set and monitor the device through WEB page;

Remote configure and control through OMCI;

MAC filtering capability keeps the network safe.

1 Hardware connection



After connection, check the status of the indicator.

Indicator	Description	Color	Notes
PWR	power	Green	On: Power is on. Off: Power is off.
PON	PON login	Green	Off: Receiving optical power is too low or no optical reception. On: Normal Flicker: Logging
LOS	Optical signal	Red	Off: ONU receiving optical power is normal Flicker: ONU receiving optical power is lower than the sensibility of receiver.

LAN	Ethernet	Green	Off: No power or no terminal devices are connected at ports On: Ports are connected without data transmission Flicker: Data is transmitted.
-----	----------	-------	---

Attention:

Check the connection if the status of indicators are abnormal.

Warnings:

Lay the device on the smooth surface.

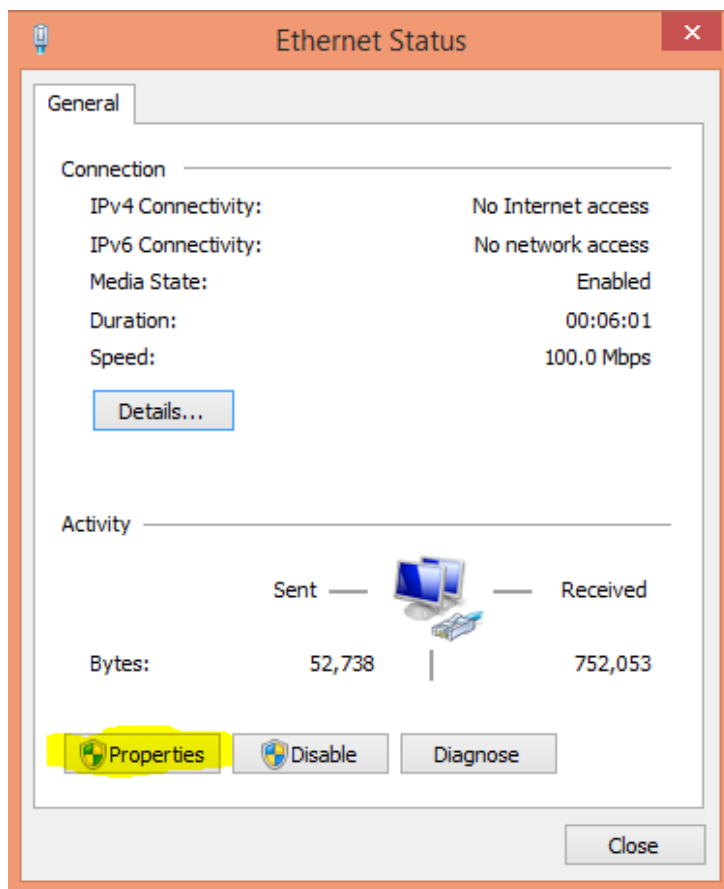
Remove the power supply and all links in thunderstorm.

Make the device far away from heating devices and keep it in air.

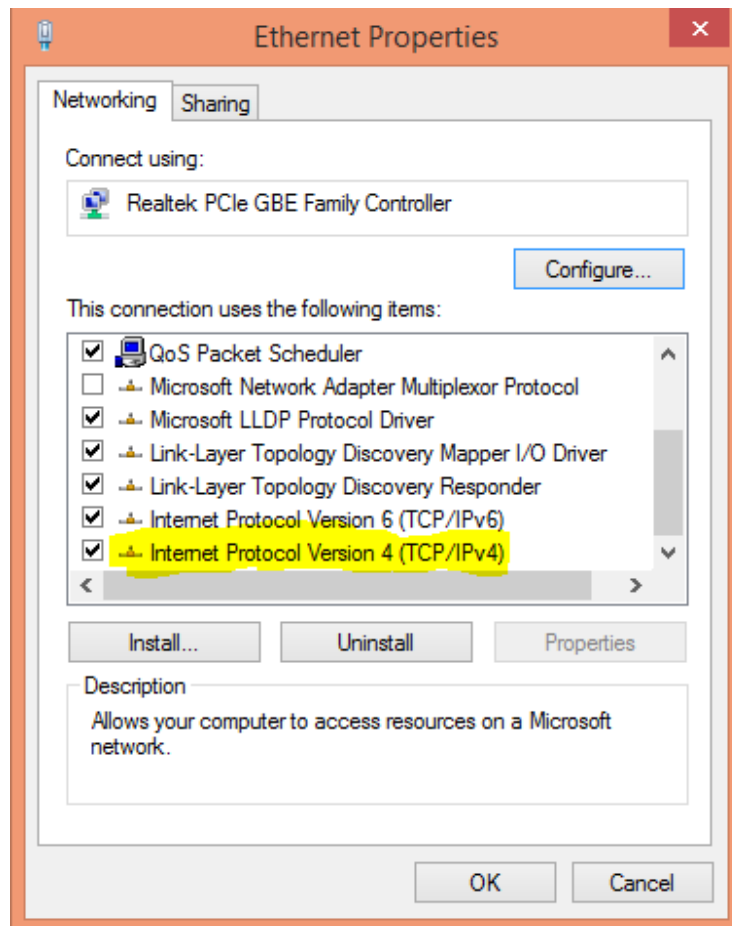
Use the configured rated power adapter.

2 Computer Settings

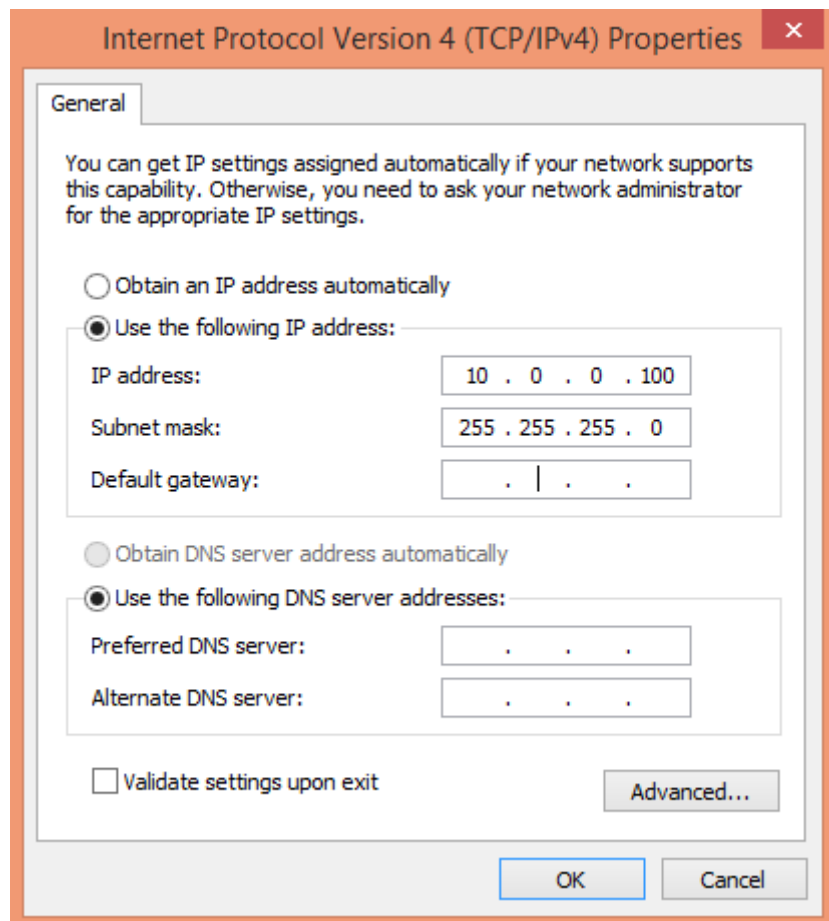
2. 1Click Start→ Panel control → Network and Internet→ Network and sharing center→ Ethernet Status, click Ethernet Status, and Properties.



2. 2 Double click Internet Protocol Version 4 (TCP/IPv4).



2. 3 Click Property. Select the following IP address. Configure the same address (10.0.0.100) as ONU segment, subnet mask 255.255.255.0.




3 Guideline settings

3.1 Enable Internet Explorer



3.2 Input 10.0.0.10 in address field to enter the interface, and type **user** and **123456** with case sensitive. Click **OK** to enable Web settings. It is suggested to reset the default password.



Input username and password

UserName:

Password:

4 Device Status

4.1 Enable the ONU interface, and click Status and device to check the basic information of the device.

Site contents:

- Status
- Admin
 - Commit/Reboot
 - Password
 - Logout

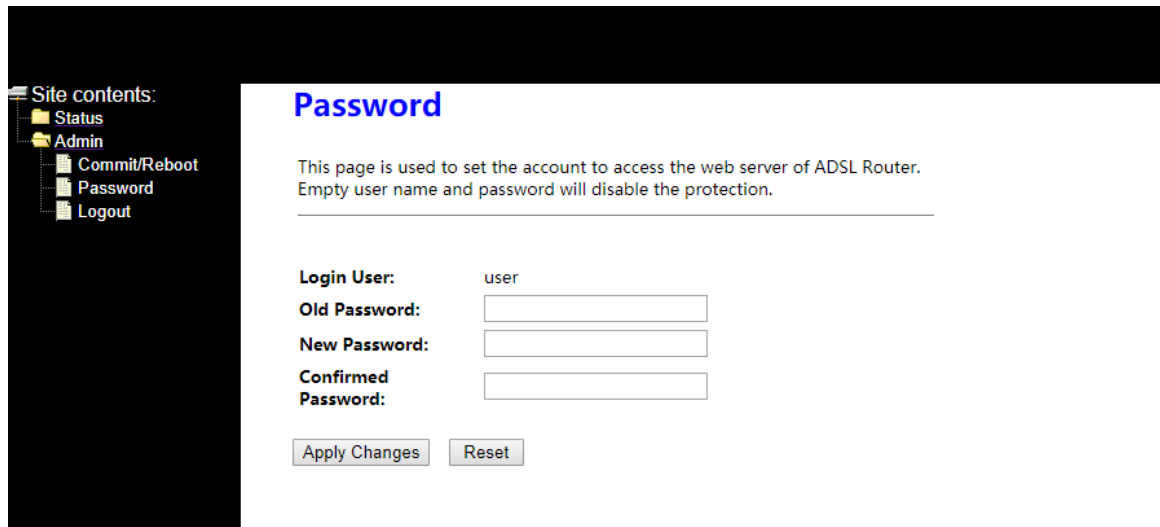
Device Status

This page shows the current status and some basic settings of the device.

System	
Uptime	2 min
Firmware Version	10.0.22B.501
CPU Usage	0%
Memory Usage	32%

LANConfiguration	
IP Address	10.0.0.10
Subnet Mask	255.255.255.0
MAC Address	8479737b133a

4. 2 Click Admin and Password. You can set user and password on WEB interface. Click **Apply Changes**.



The screenshot shows a web interface for an ADSL Router. On the left is a dark sidebar with a tree view under 'Site contents:' containing 'Status', 'Admin', 'Commit/Reboot', 'Password', and 'Logout'. The 'Admin' folder is expanded, and 'Password' is selected. The main content area has a blue header 'Password'. Below it, a message states: 'This page is used to set the account to access the web server of ADSL Router. Empty user name and password will disable the protection.' The form includes fields for 'Login User:' (pre-filled with 'user'), 'Old Password:', 'New Password:', and 'Confirmed Password:'. At the bottom are 'Apply Changes' and 'Reset' buttons.

Reset:

If you forget the user name and password to log in the ONU interface.

You should reset the ONU. Steps: when power is supplied, use a toothpick or clip to press RESET for 10 seconds. After the restart, the router can recover factory settings.

Attention:

Renew the settings of the ONU when it recovers factory settings.

Warranty Instructions

The BDCOM products purchased by consumers through legal channels can enjoy the product warranty service if there is a non-human caused failure within one year from the date of purchase. To ensure your legal rights, please note the following:

- (1) The warranty card must be stamped by the sales organization to become effective.
- (2) The warranty card should be properly kept by the user. If the warranty card is lost, the warranty card will be invalid.
- (3) If the product fails due to non-human factors, the user can repair the product for free by using the warranty card and the purchase invoice marked with the product number during the warranty period.

During the use, any of the following conditions is not covered by the warranty:

- (1) Failures and damages caused during transportation, loading and unloading;
- (2) Failure due to human factors such as disassembling and modifying without authorization;
- (3) Failure caused by the use of the environment that does not meet product requirements;
- (4) Failure or damage caused by irresistible factors (such as fire, earthquake, lightning strike, etc.);
- (5) Damage caused by failure to use, maintain, and maintain as required by the equipment manual;
- (6) Damage to the equipment enclosure, power supply, etc. caused during use;
- (7) Warranty card and product serial number do not match. The fire warranty card was altered.

For products that are not covered by the free warranty and can be repaired, paid repair services are provided. The final interpretation right of this warranty is in Shanghai Baud Data Communication Co., Ltd.

Warranty Certificate

Respectable users, thanks for selecting BDCOM products. For better service, please read, fill in and save the certificate carefully after purchasing.

Name	
Address/Code	
Mobile phone	
Product model	
Product serial number	
Date of purchase	
Invoice number	
Name of the company	
Tel/Address of the company	

The material will not be reissued if lost.

Company: (Seal)

■ □ **Shanghai Baud Data Communication Co., Ltd.**

No.123, Juli Road,

Pudong Zhangjiang High-Tech Park,

Shanghai 201203, P.R.China

www.bdcom.cn

Tel: +86-21-50800666

Copyright ©Shanghai Baud Data Communication Co., LTD. 2018. All Rights Reserved.